

Pipette Accuracy Testers



** The pipette is
not included*

***Are you sure your pipettes
are still accurate?***



AND
A&D Australasia
Excellence in Measurement
<http://www.andastralasia.com.au>

Simple tests save you great costs!

With a balance, software, and accessories all in one carrying case, A&D's pipette accuracy tester provides everything you need for easy verification of the imprecision and inaccuracies of your pipettes.

* The pipette is not included.



AD-4212B-PT



AD-4212A-PT



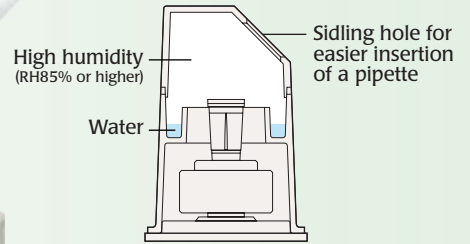
FX-300i-PT

- Compliance with ISO8655 or any other specifications based on the "gravimetric method"* *See the last page
- Select from three models covering a wide volumetric range
- Easy test and data management using special WinCT-Pipette software
- Standard liquid thermometer and evaporation trap to ensure as precise measurements as possible
- Includes a calibration weight and tweezers for the balance

Pipette Accuracy Testers

Evaporation Trap

One of the difficulties in weighing a small quantity of liquid (e.g. 50 μL or less) is controlling the environment to minimize errors due to loss of evaporation. The evaporation trap maintains high humidity inside and prevents evaporation of the test liquid. It is no longer necessary to set up and adjust the humidity of an entire room.



* The evaporation trap can also function as a breeze break to shield the balance from air draft to ensure stable weighing.

Carrying Case

The pipette accuracy tester comes packed neatly in a portable carrying case, which is useful when performing on-site tests at distant places.



AD-4212B-PT/AD-4212A-PT



FX-300I-PT

WinCT-Pipette

Setting Specifications

Enter the pipette volume and accuracy and repeatability specifications

| Specifications | |
|----------------|-----------------------|
| Pipette Volume | 50 (μL) |
| Accuracy (%) | 1.0 (μL) |
| Repeatability | 0.5 (μL) |
| | 1.2 (%) |

Measured Values

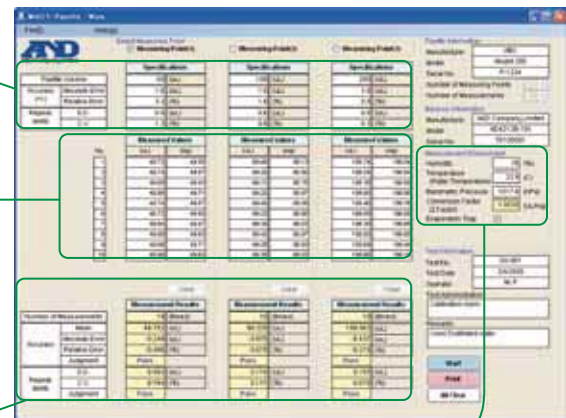
Displays the mass values transmitted from the balance and the volumetric values obtained using the Z (conversion) factor

| No. | Measured Values | |
|-----|-------------------|-------|
| | (μL) | (mg) |
| 1 | 49.72 | 49.55 |
| 2 | 49.74 | 49.57 |
| 3 | 49.60 | 49.43 |
| 4 | 49.89 | 49.71 |
| 5 | 49.74 | 49.57 |
| 6 | 49.72 | 49.55 |
| 7 | 49.64 | 49.47 |
| 8 | 49.80 | 49.53 |
| 9 | 49.88 | 49.71 |
| 10 | 49.80 | 49.53 |

Measurement Results

Displays the test results and judgment results

| Measurement Results | |
|------------------------|--------------------------|
| Number of Measurements | 10 (times) |
| Mean | 49.752 (μL) |
| Absolute Error | -0.248 (μL) |
| Relative Error | -0.496 (%) |
| Judgment | Pass |
| S.D. | 0.092 (μL) |
| C.V. | 0.184 (%) |
| Judgment | Pass |



| Measurement Environment | |
|---------------------------------|-------------------------------------|
| Humidity | 29 (%) |
| Temperature (Water Temperature) | 22.9 (°C) |
| Barometric Pressure | 1017.6 (hPa) |
| Conversion Factor (Z Factor) | 1.0035 ($\mu\text{L}/\text{mg}$) |
| Evaporation Trap | <input checked="" type="checkbox"/> |

Testing Environment

Enter the distilled water temperature and the barometric pressure to determine the Z (conversion) factor

Printing Image

For recording purposes, test results can be output to a printer and printed in an A4 or letter-size report format.

| Pipette Accuracy Test Results | | | |
|---|--|--|--|
| 1. Pipette Information Manufacturer: ABC Model: 200 Serial No: P-1234 | | 2. Balance Information Manufacturer: A&D Company Limited Model: ACP125-101 Serial No: 123456789 | |
| 3. Measurement Environment Humidity: 29 (%) Conversion Factor (Z factor): 1.0035 ($\mu\text{L}/\text{mg}$) Temperature (Water Temperature): 22.9 (°C) Evaporation Trap: Used Barometric Pressure: 1017.6 (hPa) | | | |
| 4. Specifications Pipette Volume: 50 (μL) Accuracy: 1.0 (μL) Repeatability: 0.5 (μL) C.V.: 1.2 (%) | | 5. Measured Values | |
| | | Measuring Point (1) | Measuring Point (2) |
| | | Mean: 49.752 (μL) | Mean: 49.752 (μL) |
| | | Absolute Error: -0.248 (μL) | Absolute Error: -0.248 (μL) |
| | | Relative Error: -0.496 (%) | Relative Error: -0.496 (%) |
| | | Judgment: Pass | Judgment: Pass |
| | | S.D.: 0.092 (μL) | S.D.: 0.092 (μL) |
| | | C.V.: 0.184 (%) | C.V.: 0.184 (%) |
| | | Judgment: Pass | Judgment: Pass |
| 7. Test Information Test No.: QV-001 Test Date: 24/02/08 Operator: S.S.P. Test Administration: Calibration room Signature: _____ Remarks: Used Distilled water | | | |

As a Training Kit...

It is a known fact that human factors often contribute more to erroneous measurements than the pipette accuracy itself. By visualizing the dispensed volumes and repeatability, pipette accuracy testers can be used as a good training tool for a novice to become a skilled pipette user.

Specifications

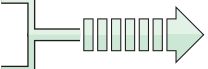
| | AD-4212B-PT | AD-4212A-PT | FX-300i-PT |
|---|---|----------------|----------------------------------|
| Weighing Capacity * ¹ | 110 g / 31 g * ² | 110 g | 320 g |
| Minimum Weighing Value | 0.1 mg / 0.01 mg | 0.1 mg | 1 mg |
| Linearity | ±0.2 mg / ±0.05 mg | ±0.3 mg | ±2 mg |
| Repeatability (Standard Deviation) | 0.1 mg / 0.05 mg | 0.15 mg | 1 mg |
| Dimensions | Weighing unit : 80 (W) x 230 (D) x 200 (H) mm Display (with a stand) : 237 (W) x 150 (D) x 155 (H) mm | | 193 (W) x 262.5 (D) x 190 (H) mm |
| Standard Accessories * ³ | <ul style="list-style-type: none"> • Instruction manual • Balance including the weighing pan unit, breeze break, AC adaptor and AC adaptor ID label • Calibration weight with a pair of tweezers • Evaporation trap • Sample cup with a holder (30 mL x 2 / 5 mL x 2) • Liquid thermometer • USB communications kit (USB converter, RS-232C cable, Instruction manual) • WinCT-Pipette (CD-ROM) • Carrying case with a shoulder belt and a key | | |
| AC Adaptor | Please confirm that the AC adaptor type is correct for your local voltage and power receptacle type. | | |
| Power Consumption | Approx. 11VA (supplied to the AC adaptor) | | |
| Carrying Case Dimensions | 470 (W) x 150 (D) x 355 (H) mm | | |
| Weight (With All Accessories in a Case) | Approx. 7.6 kg | Approx. 7.2 kg | Approx. 6.4 kg |

*¹ When the balance weighing pan is used.

*² The AD-4212B-PT is equipped with a smart range function. The minimum weighing value will switch to 0.1 mg automatically when the mass value exceeds 31 g but returns to 0.01 mg by pressing the RE-ZERO (tare) key.

*³ The standard accessories for the AD-4212B-PT / AD-4212A-PT / FX-300i-PT are different from those for the AD-4212B / AD-4212A / FX-300i.

Pipette Specifications in accordance with ISO8655

| Pipette Nominal Volume * ⁴ | ISO8655 Requirements (Gravimetric Method) | | | | | Balance Minimum Weighing Value |
|---|---|------------|------------------------------|---------|------------------|--|
| | Maximum Permissible Error | | | | | |
| | Accuracy (Systematic Error) | | Repeatability (Random Error) | | | |
| (μ L) | $\pm\%$ | $\pm\mu$ L | % | μ L | | mg |
| 20 | 1.0 | 0.2 | 0.5 | 0.1 | 0.01 |  |
| 50 | 1.0 | 0.5 | 0.4 | 0.2 | | |
| 100 | 0.8 | 0.8 | 0.3 | 0.3 | | |
| 200 | 0.8 | 1.6 | 0.3 | 0.6 | 0.1 | |
| 500 | 0.8 | 4.0 | 0.3 | 1.5 | | |
| 1000 | 0.8 | 8.0 | 0.3 | 3.0 | | |
| 2000 | 0.8 | 16 | 0.3 | 6.0 | | |
| 5000 | 0.8 | 40 | 0.3 | 15.0 | 1 * ⁶ | |
| 10000 | 0.6 | 60 | 0.3 | 30.0 | | |
| Daily inspection, simplified verification | | | | | | |

Corresponding Models

AD-4212B-PT *⁵

AD-4212A-PT

FX-300i-PT

*⁴ The maximum volume selectable for variable volume pipettes

*⁵ The AD-4212B-PT can be used for the pipette volume range from 20 μ L to 10000 μ L

*⁶ The minimum weighing value, 1mg, corresponds to approximately 1ml. If a pipette volume is 1000 μ L, a test can be performed with a resolution of 0.1%. If 200 μ L, 0.5%.

Note) Make sure that the measurement environment is free from vibration, drafts and air from air conditioners.

Gravimetric Method

The gravimetric method is the most common way of knowing the performance of variable-volume pipettes, in which pipette volume is determined based on the mass value of distilled water dispensed from the pipette.

AND
A&D Australasia
"Excellence in Measurement"

ACN 26 007 556 809

Head Office
32 Dew Street
THEBARTON South Australia 5031
Telephone (08) 8301 8100
Facsimile (08) 8352 7409

Victorian Office
39 Bakehouse Road
KENSINGTON Victoria 3031
Telephone (03) 9371 1555
Facsimile (03) 9372 1193

New South Wales Office
Unit 4, 14 Abbott Road
SEVEN HILLS New South Wales 2147
Telephone (02) 9674 5466
Facsimile (02) 9674 2544

sales@andweighing.com.au
www.andweighing.com.au

Your Dealer